



BY SAKURION

# HYDRADEM PRO<sup>TM</sup>

HYDRA FACIAL MACHINE

**GET THE BEST SKIN OF YOUR LIFE**

NON-INVASIVE FOR DEEPER PENETRATION AND LONGER LASTING RESULTS

# WHAT IS HYDRADEM PRO<sup>TM</sup>

## HYDRA FACIAL MACHINE

---

**HydroDem Pro<sup>TM</sup>** is an innovative and powerful device that integrates ten professional functions. It can effectively and quickly address common skin problems such as dehydration, cleansing, and wrinkle reduction. It completely revolutionizes traditional hand-cleaning methods, which rely on individual expertise. Hydra Facial utilizes vacuum suction technology, intelligently controlled through a combination of products and equipment to enhance skin texture. It can penetrate skin cells and effectively remove excess aging factors in the body, while also helping the skin replenish moisture more easily.

The negative pressure mode is fully controlled by an intelligent program, combining products and equipment to deeply cleanse the skin, remove acne, blackheads, and other impurities in a short time. At the same time, it enhances the deep absorption of the nutrients of the product, promotes the pores to be fine, and smooths the skin, increases the moisturizing effect of the skin, and makes the skin appear moist and white, moist and full of texture.

---

### **HydroDem Pro<sup>TM</sup>** HYDRAFACIAL MACHINE

#### **MEET ALL SKIN CARE NEEDS!**

- Fine Lines and wrinkles
- Elasticity and firmness
- Even tone and vibrancy
- Skin texture
- Brown spots
- Oily and clogged skin
- Enlarged Pores

#### **TEN-IN-ONE MULTI-FUNCTIONAL BEAUTY INSTRUMENT**

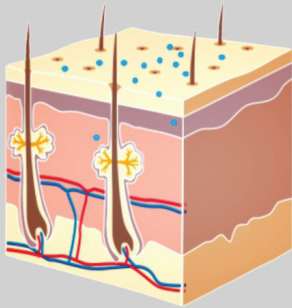






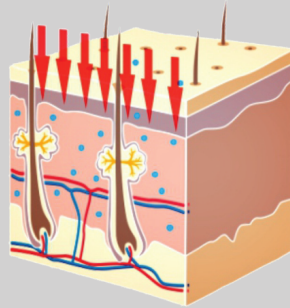
# HOW HYDRADEM PRO™ WORKS ?

The innovative Hydradem machine features advanced technology with ten specialized probes, one of which utilizes nanocrystals with nano-scale contacts to gently open the stratum corneum without penetrating the dermis. This ensures a painless, non-invasive treatment while enhancing skin absorption.



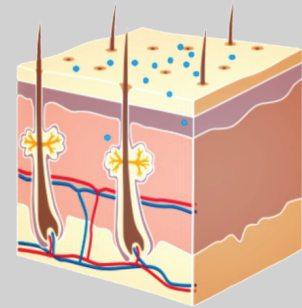
## Natural application and absorption

With natural application, skincare product molecules penetrate only the epidermis, making it difficult to reach deeper skin layers. As a result, the absorption rate remains low.



## Nanocrystalline nanochip

Nanochips penetrate the outer barrier of the epidermis without affecting blood vessels or nerves. This painless, non-invasive technology significantly enhances absorption capacity.



## EMS function

The product can penetrate the dermis evenly. Microelectronic heat conduction technology opens the pores, increasing absorption by over 40%.



## 3 STEPS. 30 MINUTES.

GET THE BEST SKIN OF YOUR LIFE

It delivers instant and long-lasting results that you can see and feel

- STEP ONE : **CLEANSE+PEEL**  
Uncover a new layer of skin with gentle exfoliation and soothing resurfacing.
- STEP TWO : **EXTRACT+EXFOLIATE**  
Remove debris from pores with painless suction. Nourish with intense moisturizers that quench skin.
- STEP THREE : **FUSE+HYDRATE**  
Saturate the skin surface with antioxidants and peptides to maximize your glow

TEN PROBES, TEN FUNCTIONS

# TEN-IN-ONE MULTI-FUNCTIONAL BEAUTY INSTRUMENT

A comprehensive skincare management system that combines cleansing, exfoliation, hydration, and antioxidant protection, resulting in clearer, more beautiful skin with no discomfort or downtime.



## AQUA PEEL

Powered by vacuum negative pressure, watering and nourishing essence are used at the same time to clean pores and remove dead skin cells.



## OXYGEN

Creates an oxygen supply environment, activating and enhancing the absorption of nutrients into the deep layers to moisturize and brighten the skin.



## COLD-HEAT

Heat: Promotes blood circulation, expands pores, and enhances absorption of skincare products.

Cool: Calms the skin, tightens pores, locks in moisture, and hydrates.



## ULTRASOUND

Ultrasound: 1-3 million vibrations per minute open the pores, allowing skincare essence to quickly penetrate the base layer of the skin, increasing the absorption rate to over 90%.



## RF (RADIO FREQUENCY)

RF generates heat to promote collagen regeneration, achieving the effect of firming the skin and reducing wrinkles.



## CLEANSING SHOVEL

Uses high-frequency vibration waves to soften skin keratinocytes and remove impurities.



## MICRO LIFT

Lifting the skin, increasing skin elasticity, reducing fine lines and wrinkles, dark circles, and bags under the eyes, eliminating puffiness and swelling.



## OXYGEN JET

High-pressure oxygen injection penetrates nutrients deeply into the skin layer, enhances water retention, and absorbs easily.

## HOW EMS FACE WORKS ?

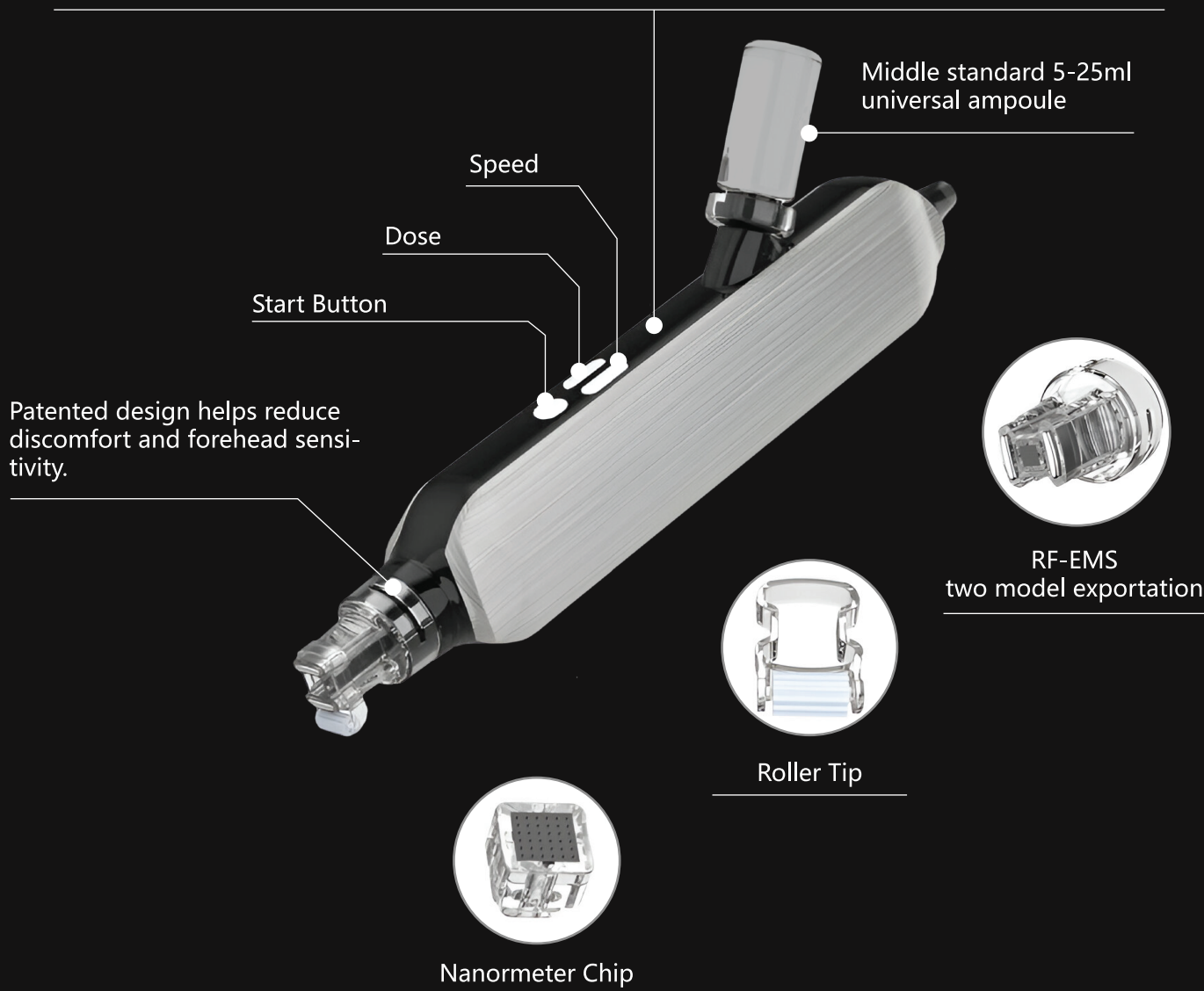
Nanocrystals use nano-scale contacts, which are thinner than 250 nanometers and as short as 0.1 mm, which can gently open the stratum corneum of the skin without touching the dermis. It not only solves the problem of skin absorption, but also achieves painless and non-invasive treatment!

### PRINCIPLE OF NANOCHIP INTRODUCTION

- ① Nanocrystals are made of monocrystalline silicon. In addition to being tough, monocrystalline silicon is thin enough and short enough to only break through the barrier layer of epidermal absorption, and it's far from touching blood vessels and nerves, so you can't feel pain or experience bleeding.
- ② Nanocrystals promote the absorption of skin care products by opening the skin absorption channel, so skin care products can be more absorbed by the skin when nano crystals are introduced.

### EMS NANO MESOTHERAPY

The new six-speed second-generation liquid pusher is combined with a high-performance and long-life motor to better improve the liquid feeding device and prevent liquid shortage.



# ANALYZER For skin analysis and effective solutions!

Accelerates the treatment of acne and acne marks, reduces pore size and blackheads, and enhances skin brightness.

## ANDROID 4.0

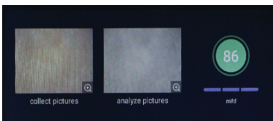
Compatible with a smart Android system, providing six key high-definition imaging analyses to assess facial problems.

Stain Analysis

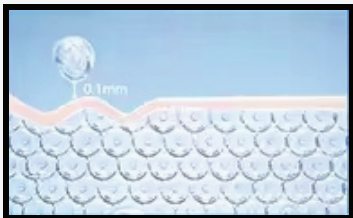
Fine Line Analysis

Sensitivity Analysis

Pore Analysis



## EMS HANDLE



Nanocrystals utilize nanoscale contact, as fine as 250+ nanometers and as short as 0.1 mm.

## OXYGEN JET



Gently opens the skin's stratum corneum without penetrating the dermis.



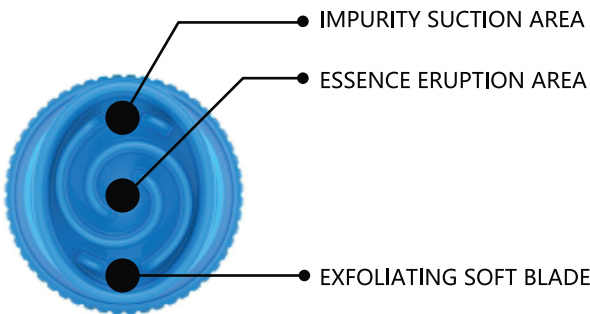
Enhances skin absorption while ensuring a painless, non-invasive solution.

# DEEP CLEANSING SKIN SYSTEM

Removes blackheads, acne, and mites while supplying moisturizing nutrients, refining pores, enhancing skin transparency, and improving skin texture.

## WHAT MAKES IT SPECIAL?

Three times the effectiveness of the operating head.



- The three distinct functional areas work simultaneously to achieve three times the effectiveness.
- Vacuum Negative Pressure technology effectively removes impurities and dirt from the skin through suction.



ANTI-ALLERGY

SOOTHING

REPAIR

SKIN TIGHTENING

# Technical specifications

## Technical characteristics

|                                   |  |
|-----------------------------------|--|
| <b>Display</b>                    | 10.4" Color Touch LCD Display  |
| <b>Voltage</b>                    | 220-240V/50Hz  |
| <b>Output power</b>               | 500W   |
| <b>RF Frequency</b>               | 0.2-0.5 MHz  |
| <b>Heat &amp; Cool</b>            | Heat : 36-46 Cool: 0-6   |
| <b>Ultrasound</b>                 | 1 MHz  |
| <b>Aqua Peel Probe</b>            | Grinding: 2 pcs, Hard: 5 pcs   |
| <b>Cleansing Shovel Frequency</b> | 26-30MHz   |
| <b>EMS Nano Mesotherapy Size</b>  | 4×4 mm × 250 μm  |
| <b>Micro Lift</b>                 | Frequency: 200 Hz, Current: 50-800 μA  |
| <b>Skin Analyzer</b>              | 23 Million HD MEGA PIXELS  |
| <b>Aqua Peel</b>                  | Vacuum Intensity: 4.5 kg, Vacuum Pressure: 96 kPa,<br>Water Flow: <50 L                    |
| <b>Solution Bottle</b>            | 1. Cleaning<br>2. Whitening and moisturizing<br>3. Deeper skin essence<br>4. Pipe cleaning |

## INTELLIGENT OPERATING SYSTEM

Versatile Functions

Versatile Languages

User - Friendly UI

10 in 1 Platform



### Our **HydroDem Pro™**

non-invasive treatment enhances skin health, targets individual concerns, and delivers an unparalleled glow. Unlike traditional facials, it is performed using a device rather than by hand, ensuring deeper penetration and longer-lasting results.



**sakurion®**

[sakurion.com](https://sakurion.com)

**CORPORATE OFFICE :**

Brand Whitlocklaan 154

1200 Sint-Lambrechts-Woluwe, Belgium

**CONTACT :**

+32 2 315 45 43

[Info@sakurion.com](mailto:Info@sakurion.com)

